



**Mundaring Arts Centre**  
 7190 Great Eastern Hwy (corner Nichol St)  
 Mundaring Western Australia  
 T: +61 8 9295 3991 F: +61 8 9295 3994  
 www.mundaringartscentre.com

It is with great pleasure that the Mundaring Arts Centre invites you Western Australia's longest standing and pre-eminent contemporary self portraiture exhibition

# MINE OWN EXECUTIONER

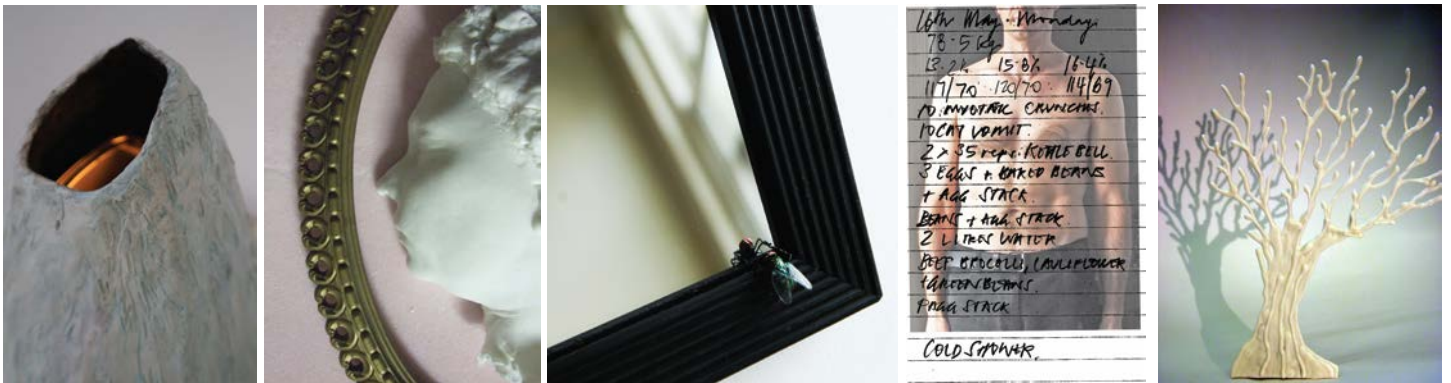
5 October to 11 November 2012  
 Main Gallery, Mundaring Arts Centre  
 Curated by Susan Flavell

This year, the 18<sup>th</sup> annual interpretation of *Mine Own Executioner* has been curated by renowned visual artist Susan Flavell, promising yet another remarkable and fresh, new take on the traditional genre of self portraiture.

*"Themes around our relationship to animals have been a long-standing interest of mine; our connection to the natural world, the interconnectedness of life, our place in this particular landscape, the use of animals in art, the possibilities or impossibilities of communication with animals (and other humans), the otherness of animals, our animal bodies."*

Susan Flavell, 2012

*Mine Own Executioner* never fails to fascinate Western Australian audiences with its diverse interpretations of the self, and Susan Flavell's exciting selection of 'executioners' is sure to prove to be no exception: Thea Costantino, Anna Dunnill, Sarah Elson, Mandy Harwood, Therese Howard, Kate Jarman, k.m.s.e. (Kate Parker, Marwa Fahmy, Stephen Genovese and Elizabeth Marpole), Katie Lenanton, Ryan Nazzari, Mark Parfitt, Rizzy, Andrea Vinkovic and Carol Wells.



*Mine Own Executioner 2012* opens 7pm, Friday 5 October and continues until Sunday 11 November. The Mundaring Arts Centre is open daily 10 am – 5 pm weekdays; 11 am – 3 pm weekends, excluding public holidays. We look forward to welcoming you.

Above images (left to right): Anna Dunnill, *The edges of my body are blurred, I can't tell where it ends*; Rizzy, *Cameo*; Therese Howard, *Self Portrait in Bronze*; Mark Parfitt, *All it is cut out to be* and Andrea Vinkovic, *Touchwood*

Mine Own Executioner 2012  
 is proudly supported by:



Government of Western Australia  
 Department of Culture and the Arts

# GALLERY 2: ARTISTS IN FOCUS

## Mundaring Hills Open Studio

Featuring Greg Crowe, Graeme Pages-Oliver and Joel Smoker  
5 October to 11 November 2012

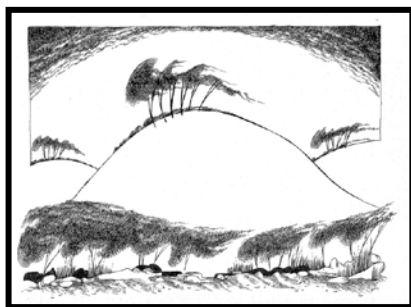
Long-time friends Greg Crowe, Joel Smoker and Graeme Pages-Oliver will exhibit professionally together for the very first time in this special ARTISTS IN FOCUS event in which they aim to demonstrate and promote the strong, home grown creative talent that can be found in the hills of Mundaring. While each brings their own, individual style to their arts practice, all three artists share an affinity with the Hills and a keen, abiding interest in the local materials and motifs to be found there.

Potter Greg Crowe is well known for both his thrown and hand built ceramic pieces created in his Hovea studio and pottery. For this exhibition, Greg unveils the first organic forms to be fired in a newly constructed, wood fired kiln at Hovea Pottery. Greg's intent for these works is to express the properties and possibilities of the wide range of clay and other pottery resources to be found locally in the Hills region.

After an art teaching career spanning some four decades, print-maker Graeme Pages-Oliver has recently focused on an art project much closer to home. As its name suggests, "One Drawing a Week" initially involved Graeme travelling into the local landscape on a weekly basis so as to create a series of largely unplanned and intuitive drawings invariably featuring trees and the natural environment they occupy. The final result is Graeme's "Inner Tree" series; a collection of finished drawings and prints that record the keen observations of the artist, imbued with the variation of thought, mood and feeling that accompanied him along the way.

Joel Smoker is a Stoneville-based artist whose art and music is known from the Kimberley to the Perth coastal plain and beyond. Over the past ten years, Joel has been working largely in ceramics, designing and creating functional stoneware using slab making techniques. With traces of the Art Deco style still evident, the new works in this exhibition seem to channel the surface textures, dusky skies and delicate colours of a Western Australian landscape that is an ever present muse in Joel's art practice.

The Mundaring Arts Centre's ARTISTS IN FOCUS exhibition has been timed to complement the annual Mundaring Hills Open Studios held this year over the weekend of 27 and 28 October. Greg Crowe, Graeme Pages-Oliver and Joel Smoker will open their studios to the public, along with fellow Hills artists T Brian Aylward, Neil Elliott, Willem Heyneker, Christine Hingston and Jeremy Holton. A free map and further information about the open studios is available from the Mundaring Arts Centre, or can be downloaded from the dedicated website: [www.mundaring-hills-open-studios.org.au](http://www.mundaring-hills-open-studios.org.au)



Above images (left to right): Greg Crowe, wood fired, salt glazed stoneware vessel;  
Graeme Pages-Oliver, Week 11, March 2011; Joel Smoker, Semi Circular Vases I-IV



**Mundaring Arts Centre**  
7190 Great Eastern Hwy (corner Nichol St)  
Mundaring Western Australia  
T: +61 8 9295 3991 F: +61 8 9295 3994  
[www.mundaringartscentre.com](http://www.mundaringartscentre.com)